

Lip Slurs - Tuba

**Slurring should be achieved by adjusting aperture and vowel shape. Maintain a steady airstream and strive to make the slur as smooth as possible.*

Fingering sequence: 0, 2, 1, 12, 23, 13, 123

1 ♩ = 60

First musical staff (bass clef, 4/4 time) showing a slur over a sequence of notes: B1, Bb1, Bb1, B1, B1, B1, Bb1, Bb1, Bb1, B1, B1, B1. The notes are grouped into four pairs, each with a slur underneath.

Second musical staff (bass clef, 4/4 time) showing a slur over a sequence of notes: Bb1, Bb1, Bb1, B1, B1, B1, B1, B1, B1, B1, B1, B1. The notes are grouped into four pairs, each with a slur underneath.

2

Third musical staff (bass clef, 4/4 time) showing a slur over a sequence of notes: Bb1, B1, B1, B1, Bb1, B1, B1, B1, B1, B1, B1, B1. The notes are grouped into four pairs, each with a slur underneath.

Fourth musical staff (bass clef, 4/4 time) showing a slur over a sequence of notes: Bb1, B1, B1, B1, Bb1, B1, B1, B1, B1, B1, B1, B1. The notes are grouped into four pairs, each with a slur underneath.

3

Fifth musical staff (bass clef, 4/4 time) showing a slur over a sequence of notes: Bb1, B1, B1, B1, Bb1, B1, B1, B1, B1, B1, B1, B1. The notes are grouped into four pairs, each with a slur underneath.

Sixth musical staff (bass clef, 4/4 time) showing a slur over a sequence of notes: Bb1, B1, B1, B1, Bb1, B1, B1, B1, B1, B1, B1, B1. The notes are grouped into four pairs, each with a slur underneath.

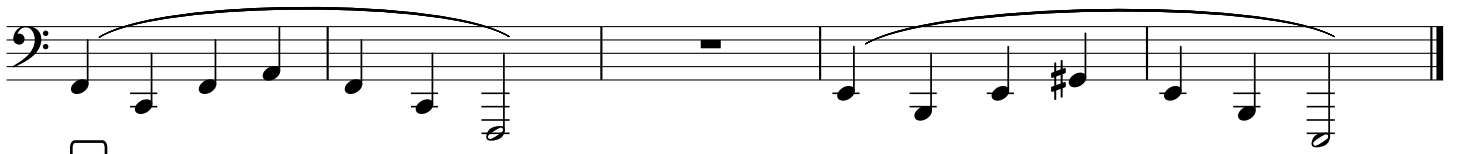
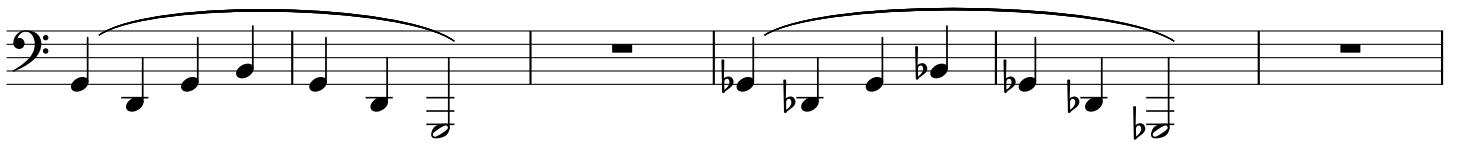
4

Seventh musical staff (bass clef, 4/4 time) showing a slur over a sequence of notes: Bb1, B1, B1, B1, Bb1, B1, B1, B1, B1, B1, B1, B1. The notes are grouped into four pairs, each with a slur underneath.

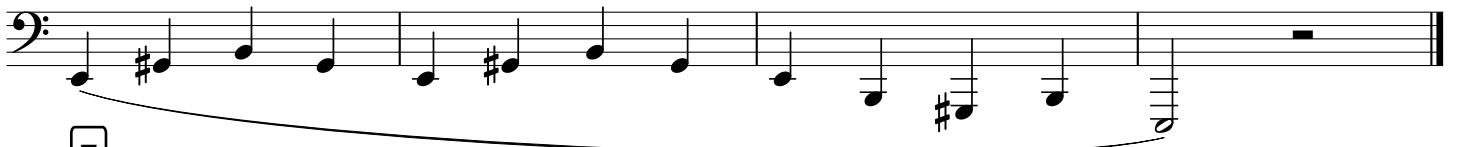
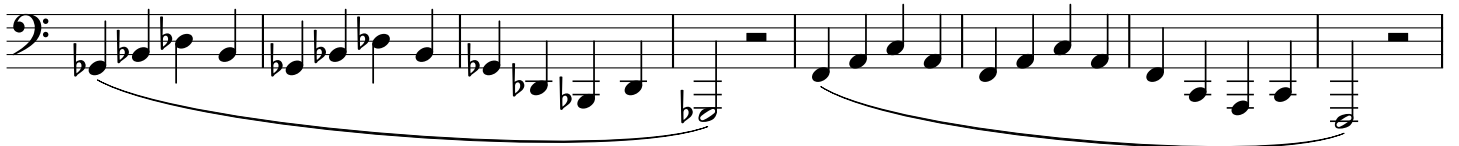
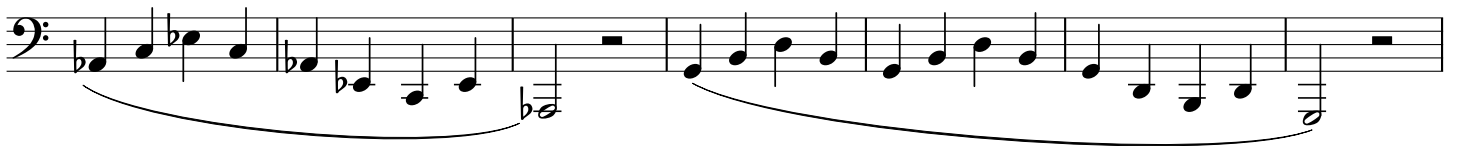
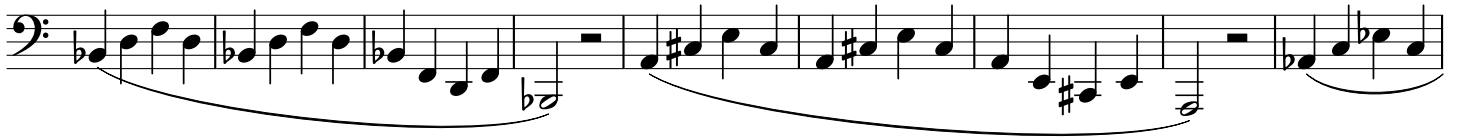
Eighth musical staff (bass clef, 4/4 time) showing a slur over a sequence of notes: Bb1, B1, B1, B1, Bb1, B1, B1, B1, B1, B1, B1, B1. The notes are grouped into four pairs, each with a slur underneath.

5

Ninth musical staff (bass clef, 4/4 time) showing a slur over a sequence of notes: Bb1, B1, B1, B1, Bb1, B1, B1, B1, B1, B1, B1, B1. The notes are grouped into four pairs, each with a slur underneath.



6



7

