



# Tumwater School District

**Dr. Carole Meyer**  
Projects:  
Interim Superintendent  
709-7005

621 Linwood Avenue SW Tumwater, WA 98512-6847  
(360) 709-7000 [www.tumwater.k12.wa.us](http://www.tumwater.k12.wa.us)

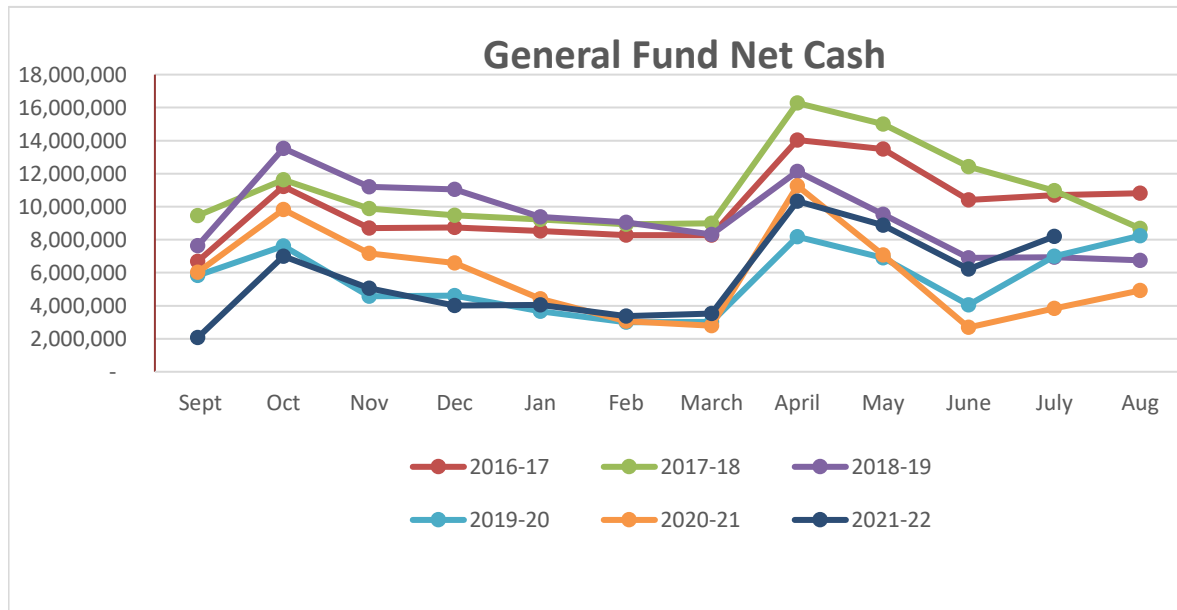
Capital  
(360)

**TO: School Board Superintendent**  
**FROM: Melissa Richter, Executive Director of Financial Services**  
**RE: Budget Status Reports for July 2022**  
**Updated Cash and Fund Balance Status for July 2022**  
**Enrollment Update June 2022**

Financial Services:  
(360) 709-7010  
Human Resources:  
(360) 709-7020  
Payroll/Benefits:  
(360) 709-7029  
Student Learning:  
(360) 709-7030  
Special Services:  
(360) 709-7040

**Budget Status Reports** - Attached are the Budget Status reports for July 2022 for all five operating funds (General Fund, Capital Projects Fund, Debt Service Fund, ASB Fund and Transportation Vehicle Fund).

**General Fund Net Cash Balance** (cash less warrants outstanding): The following graph shows the district's net cash balance for the periods 2016-17 through July 2022, which includes the cash balance of New Market Skill Center (1,860,486).

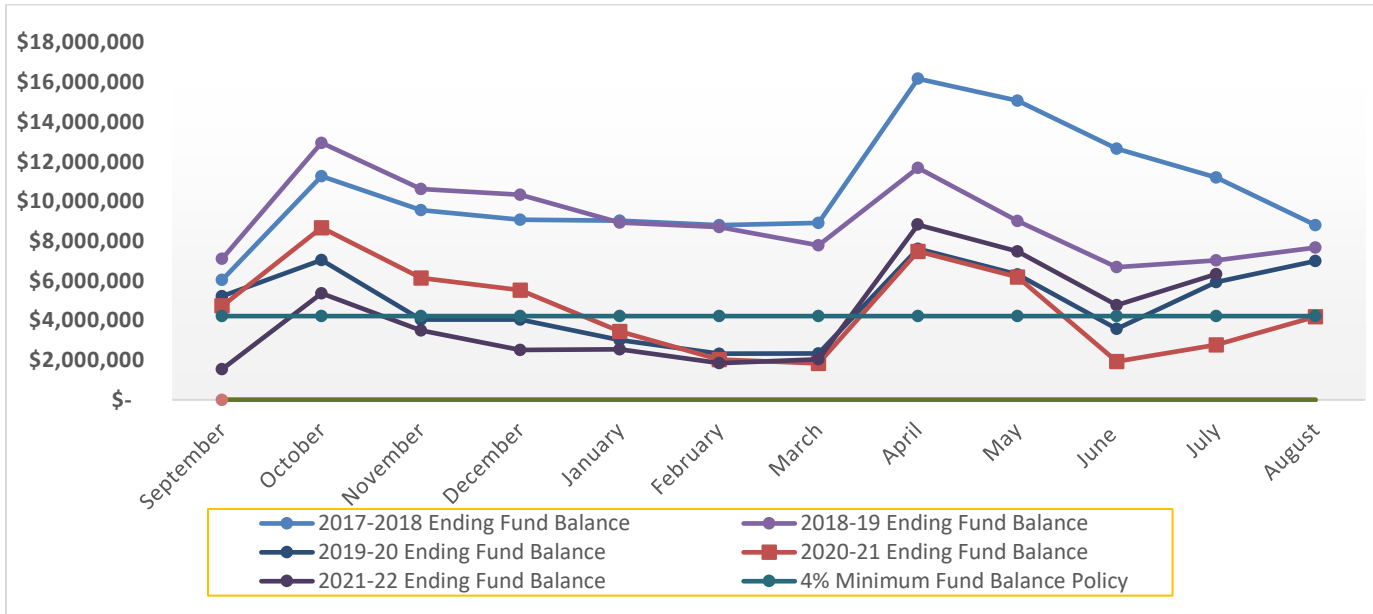


**“Continuous Student Learning in a Caring, Engaging Environment”**

**General Fund – Fund Balance (Excluding Skills Center):**

The following chart shows TSD fund balance history as of 7/31/22. The straight line is showing the minimum fund balance policy of 4% of total budgeted expenditures for the 21-22 school year which is \$4,221,991.

The fund balance for the district is: \$8,190,768 which includes \$1,860,486 for Skills Center, leaving our ending fund balance as of 7/31/22 at \$6,330,282-



**Enrollment Update**

The following shows student enrollment for the past four years, updated with June counts as of 6/1/22. These numbers include K-12 Basic Education and ALE and exclude NMSC/RS/OD. We budgeted for an Average Annual FTE (AAFTE) of 6,122 for funding purposes. Our AAFTE for the final month of reporting is 6,107, falling approximately 15 FTE short of budget.

