

# Tumwater School District

# Reopening Plan

For Families

School Year  
2020/21



Tumwater  
School District

Continuous  
Student Learning in a Caring,  
Engaging Environment

# Letter From the Superintendent

**As we know**, the 2020-21 school year is getting ready to begin. Back to school is usually time filled with excitement and new beginnings. Hopefully there is still some of that, but we also understand that in these times of uncertainty and challenges, this time is also clouded with many questions about what learning will look like in Tumwater schools.

In times like these, reflecting on our ideals, values, and sense of community is more important than ever as we continue our work to complete our mission of providing quality education and the supports necessary to achieve that to each and every one of our students.

In this booklet you will find our reopening plan in an easy-to-read users guide format. This plan represents our priorities to provide a quality education and a safe learning environment for our students and staff. We were very hopeful to start our school year in the “Yellow” restart option and to have our buildings open and students learning in a hybrid model. **However, in August the Thurston County Public Health Officer provided firm guidance that schools in our county should start in a remote learning environment** for the safety of our community as COVID-19 cases continued to rise.

Many people were involved in developing this plan, including teachers, administrators, local health professionals, and parents.

Starting the year in a fully remote learning environment is not what we wished for to start our school year. We are determined to provide the best learning experience possible. Our teachers and staff are excited to connect with students and families to begin this new journey.

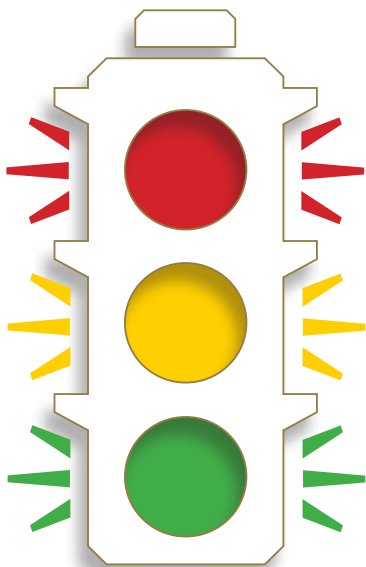
Thank you for your continued partnership and we look forward to celebrating the new successes that will be achieved in these uncertain times.

Stay safe,

Dr. Sean Dotson

# Inside this booklet

Reopening Plan Overview .....	4
School Reopening Summary .....	5
Plan for Fully Remote Learning .....	6
Tumwater Virtual Academy .....	15
Plan for Hybrid or Full-time in Building .....	16
Thurston County Public Health Response Plan .....	23
Additional Resources .....	26



**Find this plan online at  
[www.tumwater.k12.wa.us/domain/1877](http://www.tumwater.k12.wa.us/domain/1877)  
in addition to our FAQ  
about reopening schools.**

# Reopening Plan Overview

**This coming school year will be unlike any other** in history.

As we follow guidance and direction from local and state health officials, our plan has been made to allow us to safely continue our important work as teachers and learners, even as things continue to change quickly.

Plans were developed understanding that flexibility of schedule is important. We understand that not every student is able to access their classroom information online at a certain time of the day when remote learning is taking place, whether we are in “Red” or “Yellow” Reopening Models.

**As you know, we are starting the 2020-21 school year in “Red”, which is a fully remote learning model.** All students in our district will be learning remotely, under the advisement of the Thurston County Public Health Officer, until it is safe to reopen our buildings to have large groups return to in-person learning.

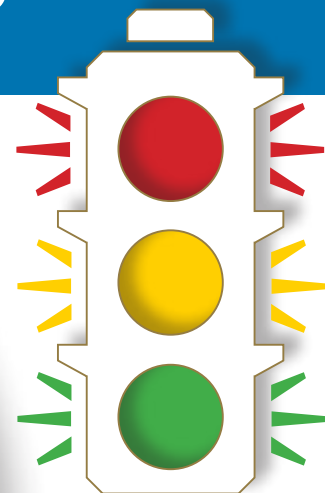
When we are able to return in “Yellow”, we will be in hybrid model where students will attend in-person two days a week, and be involved in remote learning and other educational activities the other three days of the week. Students in group A will attend Mondays/Tuesdays and students in group B will attend Thursdays/Fridays. Wednesdays will allow for a deep cleaning of the facilities between student groups while teachers are involved in professional development and/or planning for their classes.

Families who are not comfortable having their students attend in person at any time during this year can register into Tumwater Virtual Academy, which is a fully remote learning opportunity with Tumwater teachers and utilizing K12/Fuel Education curriculum.

When we are in the “Red” model, we are prepared to support all students with live/real time (synchronous) and recorded (asynchronous) opportunities. All live/synchronous sessions will also be recorded to allow for all students to view/participate as their family schedule allows. For our families with no internet connectivity, we are developing plans for small groups to be in our schools to access internet and educational materials.

We are prepared to quickly respond to changes required by local and state health officials as we plan for a smooth transition between fully remote and hybrid learning.

# Fall 2020 TSD School Reopening Plan Summary



## Fully Remote Learning On-line

### 2 Options:

#### 1. Remain enrolled in neighborhood school

Automatic – no action needed

#### 2. Enroll in Tumwater Virtual Academy

Find out more on the District website:

[www.tumwater.k12.wa.us/  
Domain/1876](http://www.tumwater.k12.wa.us/Domain/1876)

## Hybrid

### Alternating A/B Schedules of:

- In-building &
- Remote On-Line Instruction

**A** - Half of Students two days in-building  
Others remote instruction

**B** - Half of Students two days in-building  
Others remote instruction

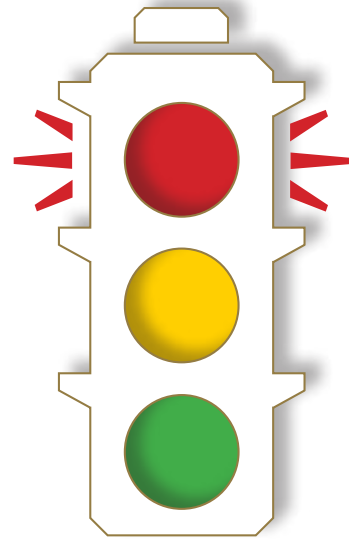
## Full-Time In-Building

All students attend school in-person

# Plan for Fully Remote Learning

**We are ready** for back to school 2020 with a plan for all students to start the year learning from home. Our improved distance learning plan includes:

- Real-time school day with teacher(s)
- Identified school start and dismissal time
- Specific times scheduled for each period/subject
- Blend of live instruction, group work, and independent activities
- Specialist & elective experiences included
- Set times for intervention support and contacting teachers
- Use of Google Classroom and Seesaw as the District-wide digital platform
- Chromebook check-out for all students
- Limited in person instruction provided for small groups of students



## Year-Long Full Distance Learning

Families who don't want their students attending school in-person at any time during the 2020-21 school year can explore registering for a full distance learning option with Tumwater Virtual Academy or [TVA@Tumwater.k12.wa.us](mailto:TVA@Tumwater.k12.wa.us), as space allows. Learn more on page 15.

## Meals

Any student enrolled in Tumwater schools can pick up meals at our school sites M-F from 8 am to 1 pm. Meals are free to all area children 18 and under through December 31st. Weekly meal boxes will also be available that contain 5 breakfasts and 5 lunches. Families should call to order their meal boxes on Mondays before 11 am for pickup the following Monday at 360-709-7740. The first pre-order of the school year must be placed by Friday, 9/11, for the following Monday. Additional details can be found on the Food Services website.

Delivery to some areas of the District may be coordinated. Please check with your school office.

We are committed to providing nutritious meals for every student every school day – no matter where they are learning.

# Plan for Fully Remote Learning

## Childcare

The Boys & Girls Club of Thurston County, YMCA's Y-Care, and Tumwater Parks & Recreation, will offer child care to Tumwater students/families during full-time distance learning. Each organization will have your child bring their District Chromebook and charger to participate in learning or may have a District Chromebook cart on-site. Questions can be directed to the child care providers as you consider what will work best for your family:

### The Boys & Girls Club of Thurston County

Location: 600 Israel Road (Tumwater High School campus)  
360-570-8888  
Hours: Monday-Friday, 8:00 am – 5:00 pm  
Cost: \$115 per child/per week (scholarship applications available)

### Tumwater Parks & Rec

Location: 1205 2nd Avenue (Michael T. Simmons campus)  
360-754-4160  
Hours: Monday – Friday, 9 am - 4 pm  
Cost: K-5th, \$125 per child/week

### YMCA's Y-Care

Location: 237 Dennis Street (old library on Peter G. Schmidt campus)  
360-753-6576  
Hours: Monday-Friday, 8:30 am-5:30 pm  
Cost: \$875 per full-time child/per month (part-time and scholarship applications available)

**To find information on licensed child care providers**, contact Childcare Action Council, 800-446-1114 or <https://childcareawarewa.org/families/#layout-accordion-2> to find care givers in your area.

When conditions in Washington State and/or Thurston County allow, the District will begin in-person learning with a hybrid model that allows students to be in class two days a week and remote learning three days. We will continue to partner with these organizations, who are ready to make adjustments to ensure students can continue receiving care and educational support.

# Plan for Fully Remote Learning

## Elementary Sample Student Schedule

	MONDAY	TUESDAY	WEDNESDAY	THURSDAY	FRIDAY
8:40 - 9:00 AM	Social Emotional Learning	Social Emotional Learning	Social Emotional Learning	Social Emotional Learning	Social Emotional Learning
9:00 - 9:40 AM	Asynchronous Reading – Video 1	Asynchronous Reading – Video 2	Asynchronous Reading – Video 3	Asynchronous Reading – Review	Asynchronous Reading – Review
	Reading Independent Practice	Reading Independent Practice	Reading Independent Practice	Reading Independent Practice	Reading Independent Practice
9:40 - 9:55 AM	Recess	Recess	Recess	Recess	Recess
9:55 - 10:00 AM	Transition	Transition	Transition	Transition	Transition
10:00 - 10:30 AM	Open Office Hours Q & A	Open Office Hours Q & A	Open Office Hours Q & A	Open Office Hours Q & A	Open Office Hours Q & A
10:30 - 10:35 AM	Transition	Transition	Transition	Transition	Transition
10:35 - 11:10 AM	Reading Small Group Intervention	Reading Small Group Intervention	iReady	Reading Small Group Intervention	iReady
11:10 - 11:40 AM	Lunch	Lunch	Lunch	Lunch	Lunch
11:40 - 11:50 AM	Transition	Transition	Transition	Transition	Transition
11:50 - 12:35 PM	Specialist Time	Specialist Time	Specialist Time	Specialist Time	Specialist Time
12:35 - 1:10 PM	Asynchronous Math – Video 1	Asynchronous Math – Video 2	Asynchronous Math – Video 3	Asynchronous Math – Video 4	Asynchronous Math – Video 5
	Independent Math Practice	Independent Math Practice	Independent Math Practice	Independent Math Practice	Independent Math Practice
1:10 - 1:25 PM	Recess	Recess	Recess	Recess	Recess
1:25 - 1:30 PM	Transition	Transition	Transition	Transition	Transition
1:30 - 2:05 PM	iReady	Math Small Group/ Intervention	iReady	Math Small Group/ Intervention	Math Small Group/ Intervention
2:05 - 2:20 PM	Additional Independent Practice	Additional Independent Practice	Additional Independent Practice	Additional Independent Practice	Additional Independent Practice
2:20 - 2:35 PM	Asynchronous Social Studies Video	Asynchronous Social Studies Video	Asynchronous Science Video	Asynchronous Science Video	Asynchronous Science Video
2:35 - 3:10 PM	Social Studies Independent Practice	Social Studies Independent Practice	Science Independent Practice	Science Independent Practice	Science Independent Practice



## Middle School Sample Student Schedule

	MONDAY	TUESDAY	WEDNESDAY	THURSDAY	FRIDAY
8:00 - 9:45 AM	Period 1	Period 4	Period 1/ Period 4 Full Asynchronous Learning	Period 1	Period 4
9:45 - 9:55 AM	Transition	Transition	Transition	Transition	Transition
9:55 - 11:40 AM	Period 2	Period 5	Period 2/ Period 5 Full Asynchronous Learning	Period 2	Period 5
11:40-11:45 AM	Transition	Transition	Transition	Transition	Transition
11:45 - 12:15 PM	Lunch	Lunch	Lunch	Lunch	Lunch
12:15 - 2:00 AM	Period 3	Period 5	Period 3/ Period 6 Full Asynchronous Learning	Period 3	Period 6
2:00 - 2:30 PM	Office Hours	Office Hours	Office Hours	Office Hours	Office Hours
2:30 - 2:40 PM	Departure	Departure	Departure	Departure	Departure

## High School Sample Student Schedule

	MONDAY	TUESDAY	WEDNESDAY	THURSDAY	FRIDAY
7:30 - 7:40 AM	Arrival	Arrival	Arrival	Arrival	Arrival
7:40 - 8:20 AM	Career Readiness/ Wellness High School & Beyond	Career Readiness/ Wellness High School & Beyond	Career Readiness/ Wellness High School & Beyond	Career Readiness/ Wellness High School & Beyond	Career Readiness/ Wellness High School & Beyond
8:20 - 10:00 AM	Period 1	Period 4	Homeroom (8:20 - 8:45)	Period 1	Period 4
			Period 1/Period 4 Full Asynchronous Learning (8:45 - 10:20)		
10:00 - 10:10 AM	Transition	Transition	Transition	Transition	Transition
10:10 - 11:50 AM	Period 2	Period 5	Transition	Period 2	Period 5
			Period 2/Period 5 Full Asynchronous Learning (10:25 - 12:00)		
11:50 - 12:20 PM	Lunch	Lunch	Lunch	Lunch	Lunch
12:20 - 12:30 PM	Transition	Transition	Transition	Transition	Transition
12:30 - 2:10 PM	Period 3	Period 6	Transition	Period 3	Period 6
			Period 3/Period 6 Full Asynchronous Learning (12:35 - 1:10)		
2:10 - 2:20 PM	Departure	Departure	Departure	Departure	Departure

# Plan for Fully Remote Learning

## Attendance

Attendance is an essential building block for a student's education. While we are in fully remote learning, attendance is still essential and required. During fully-remote learning, the Office of Superintendent of Public Instruction has defined attendance regulations. An absence is when a student is not participating in planned instructional activities on a scheduled remote learning day. Examples of what student participation could look like in order to be counted as present include, but are not limited to:

- Daily logins to learning management systems
- Daily interactions with teacher(s) to acknowledge attendance (including messages, emails, phone calls, or video chats); or
- Evidence of participation in a task or assignment

Student attendance is determined by their engaging in planned asynchronous (recorded) or synchronous (live) activities. If a student does not engage or demonstrate participation in any way, the student will be marked as absent. The District is required to take daily attendance for all students.

## Grading and Reporting

We use grades to communicate information about what students know and are able to do. During the closure last Spring, we used temporary rules from the state to adjust how final grades were determined and reported to families. We will review our current policies and practices for grading and reporting this Fall with a goal of continuous improvement in how we share learning outcomes with students, families, and others.

# Plan for Fully Remote Learning

## Special Education

Tumwater School District will provide a continuum of special ed services to meet the individual needs of students and families, prioritizing in-person services when it is safe to do so. TSD will partner with families at the beginning of the year to determine what services are needed to address the impact of COVID on each student's academic and social/emotional wellbeing. Services may need to be adjusted from current IEPs depending on the educational model we are using. Any adjustments will be made in partnership with families.

### Schools are closed to most students

- Special education teachers provide real-time learning blocks via District platforms following the school schedule.
- Students receive OT, PT, or speech services via consult or teletherapy.
- In-person services may be available on a limited basis for students who need face-to-face instruction to make progress and as determined by IEP teams.

### Tumwater Virtual Academy Parent-requested Full Distance Learning

- Parents register their student for year-long distance-only learning.
- Students attend real-time learning blocks via District platforms.
- Students will be assigned a special education case manager through their neighborhood school.

# Plan for Fully Remote Learning

## English Language Development

Tumwater School District will provide English Language Development services to all identified students.

### Learning On-Line

- EL students in K-5th grade will receive an on-line pull-out model in addition to their general education daily class schedule. Collaboration between EL staff and general education teachers will ensure successful outcomes for students.
- Dual served EL students in K-12th grade in specialized programs may receive services in an on-line or in-person model.

## Technology Support and Access

- A Chromebook will be checked out to every TSD student, K-12, for use during the school year while enrolled in TSD.
- Wireless internet access is available for students and staff in the parking lots of several schools. Limited amounts of hotspots will be available for checkout.
- Staff professional development will be available with a focus on virtual class meetings, communication and announcements, curriculum content management, and assignments.
- Resources will be publicly available for students and parents to learn more about the core applications that will be used.
- Family Support Resources will be available with videos and guides on our website.
- For families with no internet connectivity options, as conditions allow, small groups of students may be allowed on campus to access District resources.



# Plan for Fully Remote Learning

## Social Emotional Health

Schools create the best learning environments by promoting healthy interactions among students and staff, and teaching social, emotional, and self-regulation skills. Teachers, staff, and administrators will support a social emotional learning environment by enhancing previously existing relationships with students and families, as well as:

- Establishing a routine and maintaining clear communication
- Empathizing with the difficulties resulting from routines that have already changed due to current events
- Explaining that there will likely be future changes to routines, which will be communicated ahead of time when it is possible to do so
- Providing information in digestible amounts, and encouraging students to ask clarifying questions
- Encouraging students to lead the way in sharing what they do and do not understand about their current situation. This is done by asking open-ended questions, such as, “How are you feeling about not being in school?”

Now, more than ever, students should feel valued and welcomed regardless of their backgrounds or identities. Routines, both new and existing, are key for positive Social Emotional Health for students. Participating in these routines helps educators build and maintain connections despite their physical distance from their students.

The Free Family Wellness Toolkit is available to each of our families and provides access to over 50 different simple activities to help decrease stress and increase connection at home. This is available through our partnership with Generation Wellness, founded by Black Hills High School graduate Lyndsay Morris.

Visit the Tumwater School District website and click the headline that says “Free Family Wellness Toolkit” for more information and login instructions.

# Plan for Fully Remote Learning

## Extracurricular and Activities

Extracurricular sport and activities in Washington are governed by the Washington Interscholastic Association (WIAA). To ensure safety for students and staff the WIAA has modified the 2020-21 calendar to create four WIAA-sanctioned seasons, as follows:



- **Season 1: Sep 7 – Oct 31:** Designated as an alternate season for low-risk sports. This season has been postponed.
- **Season 2: Dec 28 – Feb 27:** Basketball (Boys & Girls), Bowling (Girls), Wrestling (Boys & Girls)
- **Season 3: Mar 1 – May 1:** Volleyball (Girls), Competitive Cheerleading, Cross Country (Boys & Girls), Football Feb 17 – May 18: Golf (Boys), Soccer (Girls), Swim & Dive (Girls), Tennis (Boys)
- **Season 4: Apr 26 – Jun 26:** Baseball, Competitive Dance/Drill, Fastpitch Softball, Golf (Girls), Tennis (Girls), Track & Field (Boys & Girls), Soccer (Boys)

The WIAA is working with Drama and Debate organizations to develop a season schedule. Debate is working on creating a virtual season.

The WIAA also established a possible out-of-season coaching period from Sep 28 – Nov 30. We are working with the Health Department to safely incorporate strength conditioning prior to Sept. 28th. This window would mimic the traditional summer coaching window sanctioned by the WIAA and would follow current Washington COVID-19 guidelines for gatherings, safety protocols, and District approval based on current distance learning models. The Tumwater School District will participate when appropriate.

Protocols and Guidelines for Athletics will include:

- Training for Coaches/Advisors around safety/cleaning
- Physical/Social Distancing
- Health Screenings
- Personal Hygiene
- Face Coverings
- Equipment
- Facilities & Cleaning
- Transportation

# Plan for Fully Remote, Hybrid & Full-time in Buildings

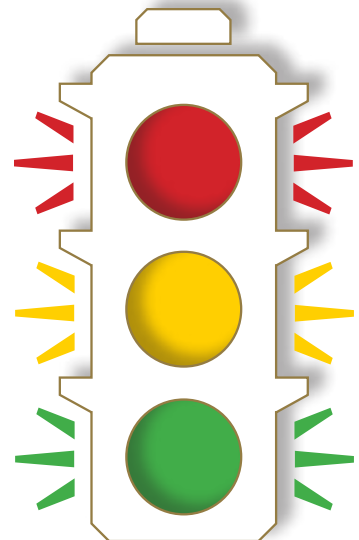
## Year-Long Full Distance Learning Options

Families who do not want their students attending school in person at any time during the 2020-21 school year can register for a full distance learning option with Tumwater Virtual Academy. For students who may want to return to in-person learning, accommodations will be made providing there is space available.

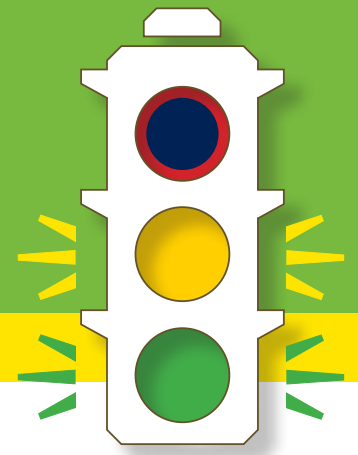
## Tumwater Virtual Academy (TVA) for Grades K-12

Self-paced and paced opportunities, with curriculum that includes online and off-line materials, plus project learning activities. Orientations for parents and students will be scheduled during the start of the school year and second semester, to include an overview of student expectations and technical training for use of the assigned programs. Checkout of Chromebooks will be done by the student's home school. **Tumwater Virtual Academy** will provide:

- Regularly scheduled interaction with teachers
- Self-paced learning with a teacher check-in schedule that works best for the family
- A blend of live instruction, group work, and independent activities
- Elementary, middle, and high school elective activities.



# Plan for Hybrid or Full-time in Buildings



## Health and Safety Requirements

The health and safety of students, staff, and visitors is our highest priority. To comply with local, state, and national health department guidance, TSD will implement the following health and safety requirements:

### Face Coverings

- Everyone in school district facilities and on school busses, including staff, will be required to wear a face covering.
- Parents and guardians should provide children with cloth face coverings.
- For those who forget their own, disposable masks will be provided at building entrances.
- Face shields will be provided to instructional staff to wear while teaching 6 feet from students, and for certain students who cannot wear a mask.

**Note:** Students will be provided opportunities throughout the school day to take breaks outside where masks can be removed when staying 6 feet apart from others, supervised by staff.

### Daily Health Screenings

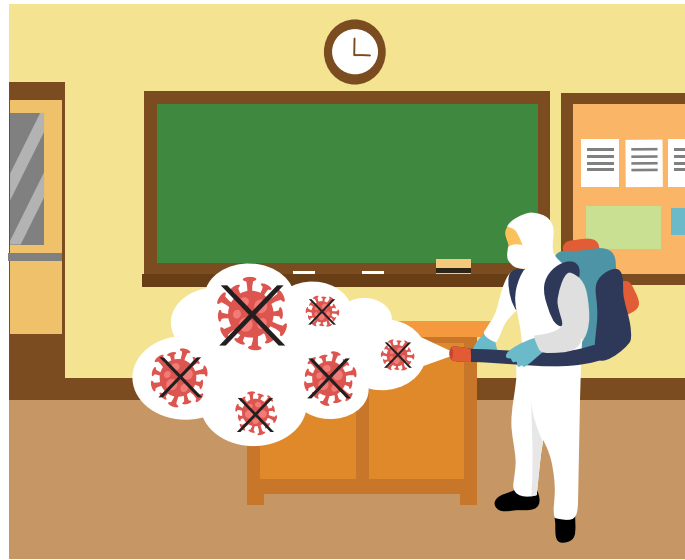
- Families and staff will be required to do a daily health screening. This will be done through a Skyward app that will ask required health screening questions. Information is provided to school offices to verify that students and staff can attend school. Anyone who reports being ill or having a temperature over 100.4 degrees will need to stay home.
- Students and staff who do not complete the daily health screening prior to the start of the school/workday will be required to report to the office for screening.



# Plan for Hybrid or Full-time in Buildings

## Hygiene Practices

- Staff and students will be encouraged to wash their hands frequently, including at the start of the school day, before lunch, after recess, after using the restroom, and at the end of the school day.
- Cleaning supplies will be provided to staff at the buildings and in classrooms to assist with wiping down surfaces.
- At the elementary level, desks will be cleaned and disinfected between student uses.
- High touch areas such as counters, doorknobs, handrails, doors and entryways, sink faucet handles, drinking fountains, light switches, pencil sharpeners, etc., will be cleaned and disinfected frequently.



## Ventilation

In accordance with health department and ASHRAE recommendations, TSD has increased air exchange duration and rates to provide additional circulation and filtration outside of normal operational hours. HVAC filters have been upgraded to capture viral particles more effectively and to reduce airborne infectious material.

## Physical Distancing

- Classrooms will be arranged to have students sitting 6 feet apart.
- Social distancing will be required. Floor signage/markers/painted emblems will be placed anywhere students, staff, and the general public may need to wait in a line for a prolonged period of time.
- Plexiglass barriers will be installed in areas where social distancing is not possible, such as the school office and other areas, as needed.

# Plan for Hybrid or Full-time in buildings

## Showing Signs of COVID-19 at school

- If someone develops symptoms while at school they will be separated from others, asked to keep a mask on, and sent home. The area where the symptomatic person waited will be aired out, cleaned and disinfected after they leave.
- Each school will have a designated area where sick students can be separated until they can be picked up by an authorized person.
- The person with symptoms should follow Department of Health guidance for what to do if you have symptoms for COVID-19 and have not been around anyone who has been diagnosed with COVID-19. If a student or staff member is diagnosed with COVID-19, their family should notify the school.
- The local health authority will advise the District on next steps, and it is likely that many of the other students or staff who were in “close contact” (defined as within 6 feet **and** 15 minutes or more, with or without a mask) with the infected individual will need to self quarantine for 14 days.

## Returning to School After Having Suspected Signs of COVID-19

A staff member or student who had signs of suspected COVID-19 can return to school when:

- At least one day (24 hours) has passed since recovery – defined as no fever without the use of medications and improvement in respiratory signs like cough and shortness of breath; **and**
- At least 10 days have passed since signs first showed up; **or**
- It has been at least one day (24 hours) since recovery **and** a health care provider has certified that the student does not have suspected COVID-19.
- If a person believes they have had close contact to someone with COVID-19, but they are not sick, they should watch their health for signs of fever, cough, shortness of breath, and other COVID-19 symptoms during the 14 days after the last day they were in “close contact” (defined as within 6 feet **and** 15 minutes or more, with or without a mask) with the person sick with COVID-19. They should not go to work, child care, school, or public places for 14 days.

# Plan for Hybrid or Full-time in Buildings

## Meals

- Students may bring food for their personal consumption or participate in the school meal program.
- Bagged meals will be provided to elementary students to eat in their classroom, supervised by their teacher. Secondary schools may have the option of eating in the cafeteria (6 feet apart), in classrooms, in hallways, or a combination of all three, supervised by staff.
- No sharing of outside food items is allowed during school hours.
- Meal funds must be deposited prior to meal time to improve line service speed and keep students and staff safe.
- **No cash or checks will be accepted in serving lines.** Deposit money online through the District website (click the \$ fees and fines icon under the scrolling photos).

## Transportation

- Buses will be thoroughly cleaned before and after each morning and afternoon routes.
- Face coverings must be worn by everyone on the bus. Bus drivers will have extra disposable masks for students who need one.
- When possible try to maintain a 6 ft. distance around the driver's compartment.
- Windows will be kept open as much as possible to maximize outside air.
- Students will have assigned seats, one per seat. If additional seats are needed, students in the same household may be assigned to share.



## Child Care

Please refer to page 7.

# Plan for Hybrid or Full-time in Buildings

## Learning Plans - Hybrid (Yellow)

### Grades K-12

- Students in grades K-12 will have an **A/B schedule** 2 or 3 days each week with online learning activities when not at school and time set aside for virtual support.  
**GROUP A:** Goes to school Monday and Tuesday  
**GROUP B:** Goes to school Thursday and Friday  
*Wednesday will be remote day for all students. Classrooms will be cleaned.*
- Class sizes are designed for 6-foot social distancing. During in-school days, students will receive detailed instructions about what to work on and how to spend their distance learning day. When they return to the classroom, teachers will review and answer questions.
- Students will use District digital platforms.
- Cascadia High School, Early Childhood Learning Center, New Market Skills Center, New Market High School and LINC'S programs will communicate their school or program's learning model.

# Plan for Hybrid or Full-time in Buildings

## Special Education

Tumwater School District will provide a continuum of special ed services to meet the individual needs of students and families, prioritizing in-person services when it is safe to do so. TSD will partner with families at the beginning of the year to determine what services are needed to address the impact of COVID on each student's academic and social/ emotional wellbeing. Services may need to be adjusted from current IEPs depending on the educational model we are using. Any adjustments will be made in partnership with families.

### **Tumwater Virtual Academy: Parent-requested Distance Learning**

- Parents register their student for distance-only learning.
- Students will be assigned a special education case manager through the Tumwater Virtual Academy program.



# Plan for Hybrid or Full-time in Buildings

## English Language Development

TSD will provide English Language Development services to all identified students.

### Examples of additional services:

#### Hybrid

- EL students in K-5th grade will attend 2 days a week and receive both in-person and on-line services. Collaboration between EL staff and general education teachers will ensure successful outcomes for students.
- EL students in 6-12th grade will follow the secondary A/B schedule with the option for in-person intervention for newcomers on “digital days”, pending staffing.
- Dual served EL students in K-5th grade in specialized programs will receive both in-person and on-line services.
- Dual served EL students in 6-12th grade in specialized programs will follow the secondary A/B schedule for in person instruction.

#### Full-Time in Buildings

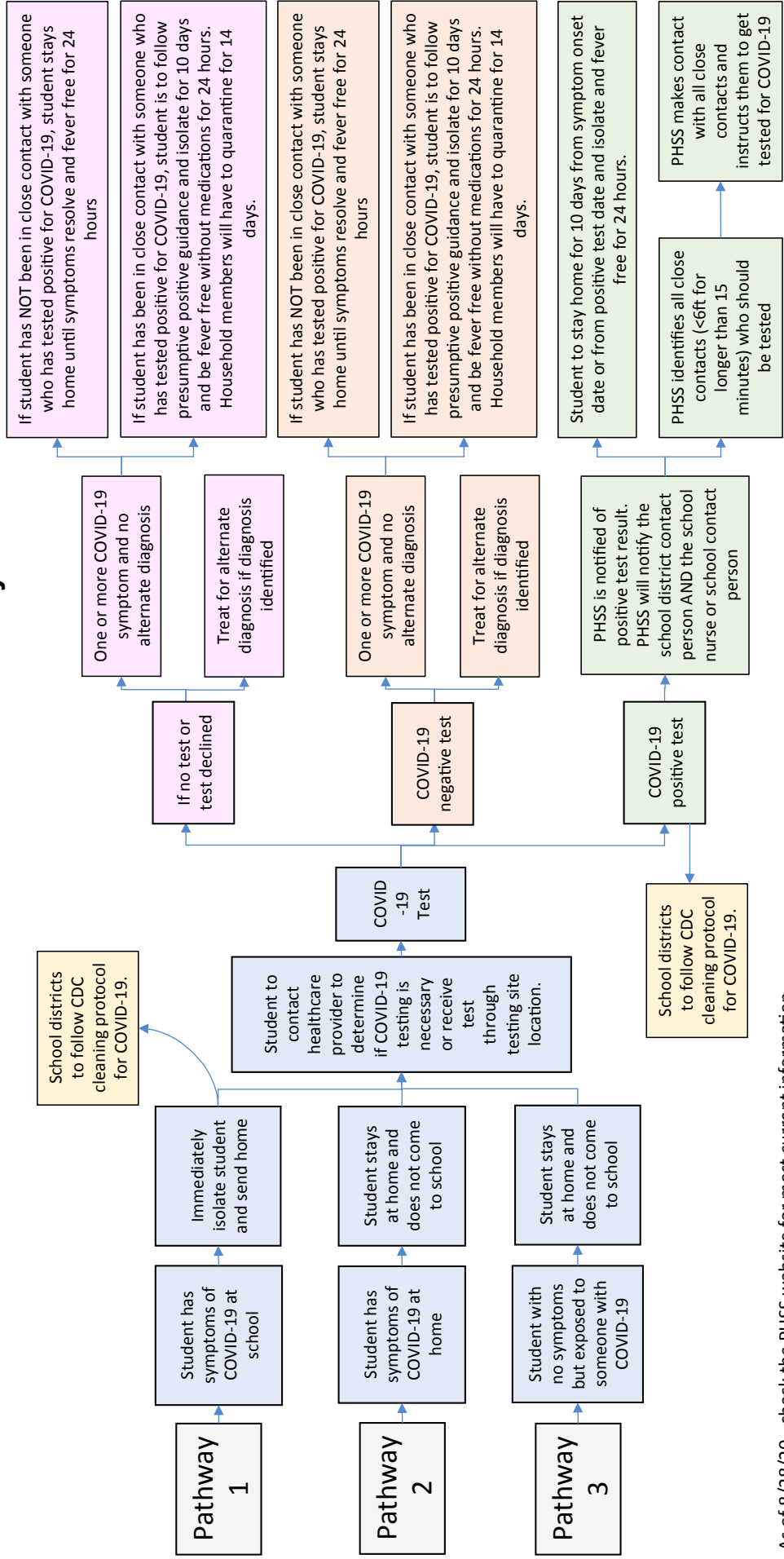
- EL students in K-5th grade will attend 5 days a week and receive services in a push-in or pull-out model.
- EL students in 6-12th grade will attend 5 days a week following the secondary schedule. Services will be provided daily in their EL class.
- Dual served EL students in K-12th grade in specialized programs will receive services in a push-in or pull-out model.



# Response Plan

The following three charts are from Thurston County Public Health and Social Services. You will see the pathways we will follow when students or staff have symptoms at school, at home, or have been exposed to someone who tested positive for COVID-19. These documents are as of August 28, 2020, and the most current information will be found on the PHSS website.

## Thurston County Public Health and Social Services (PHSS) and Thurston County Schools COVID-19 Student Pathway



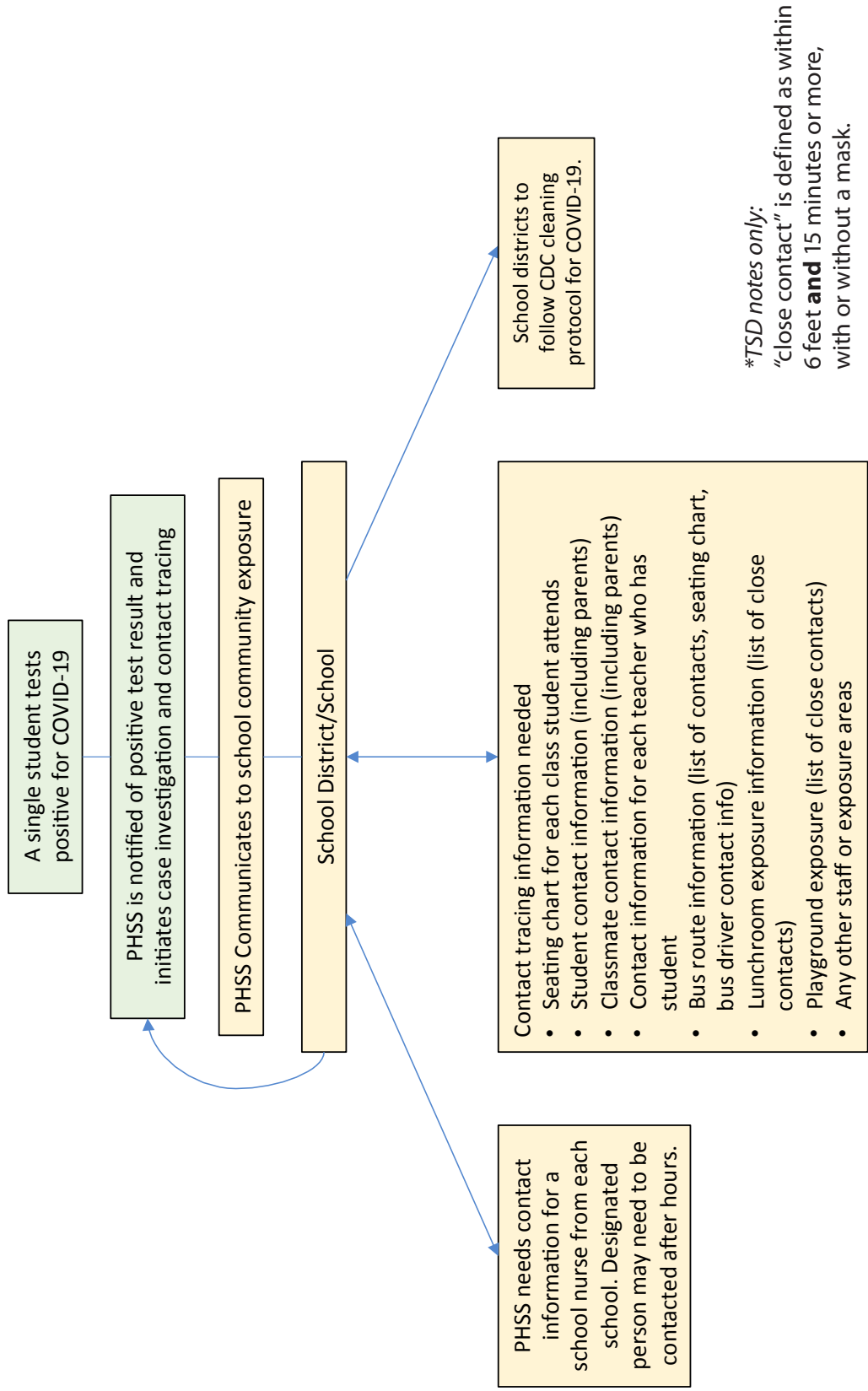
As of 8/28/20 - check the PHSS website for most current information.

\*TSD notes only: "close contact" is defined as within 6 feet and 15 minutes or more, with or without a mask.



# Response Plan

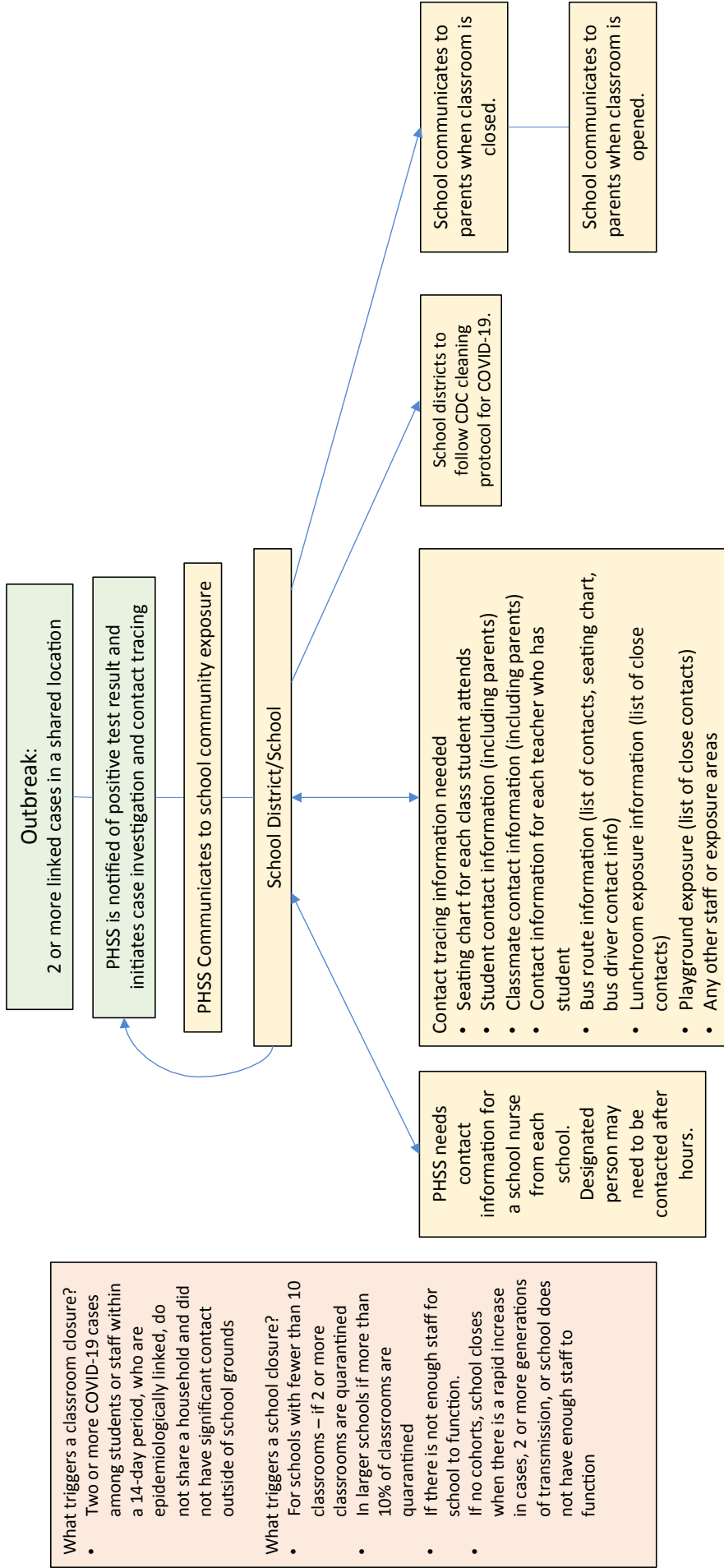
## Thurston County Public Health and Social Services (PHSS) and Thurston County Schools Communication Plan





# Response Plan

## Thurston County Public Health and Social Services (PHSS) and Thurston County Schools Communication Plan



As of 8/28/20 - check the PHSS website for most current information.

*\*TSD notes only:*  
 "close contact" is defined as within 6 feet **and** 15 minutes or more, with or without a mask.

# Additional Resources

## Check Out These Additional Resources Online

- **TSD's Remote Learning Information, Help, and Resources**  
<https://www.tumwater.k12.wa.us/Page/9119>
- **OSPI Reopening Washington Schools 2020 District Planning Guide**  
<https://www.k12.wa.us/sites/default/files/public/workgroups/Reopening%20Washington%20Schools%202020%20Planning%20Guide.pdf>
- **OSPI Reopening Washington Schools 2020: Special Education Guidance**  
<https://www.k12.wa.us/sites/default/files/public/specialed/pubdocs/Reopening-WA-Schools-2020-SpEd-Guidance.pdf>
- **OSPI Talking to your children about school closures**  
<https://medium.com/waospi/talking-to-your-children-about-school-closures-aeb3e6be6456>
- **Tips for helping kids wear face masks**  
<https://med.umich.edu/mott/thrive/tips-for-helping-kids-wear-masks>
- **Thurston County Public Health and Social Services COVID-19 Website**  
<https://www.thurstoncountywa.gov/phss/Pages/coronavirus.aspx>
- **Washington DOH Decision Tree for provision of in person learning**  
[https://www.doh.wa.gov/Portals/1/Documents/1600/coronavirus/DecisionTree-K12schools.pdf?utm\\_medium=email&utm\\_source=govdelivery](https://www.doh.wa.gov/Portals/1/Documents/1600/coronavirus/DecisionTree-K12schools.pdf?utm_medium=email&utm_source=govdelivery)